

SAMSUNG

FJM

Technical Data Book

**Free Joint Multi for Europe
(R32, 50Hz, HP)**

KONSOLA



Model : Outdoor unit (AJ***TXJ*KG/EU)

Indoor unit (Wall-mounted, Wind-Free 1Way Cassette, Wind-Free 4Way Cassette(600x600), Duct, Console)

Nomenclature

Indoor Unit

1Way Cassette, 4Way Cassette(600x600), Duct, Console Type

Model Name

AJ	026	R	B	1	D	E	G	/	EU
(1)	(2)	(3)	(4)	(5)	(6)	(7)	(8)		Buyer

(1) Classification

AC	CAC
AM	DVM
AJ	FJM (Free Joint Multi)
AE	EHS

(2) Capacity

X1/ 10 kW(3 digits)

(3) Version

R	2019
T	2020
A	2021
B	2022

(4) Product Type

S	SET (NASA)
N	Indoor Unit (NASA)
X	Outdoor Unit (NASA)
A	SET (Non NASA)
B	Indoor Unit (Non NASA)
C	Outdoor Unit (Non NASA)

(5) Product Notation

1	(Wind-Free) 1Way Cassette
N	(Wind-Free) 4Way Cassette (600x600)
L	Slim Duct
M	MSP Duct
J	Console

(6) Feature

D	DELUXE
P	Premium

(7) Rating Voltage






A	115V, 60Hz
B	220V, 60Hz
C	208~230V, 60Hz
D	200~220V, 50Hz
E	220~240V, 50Hz
K	220~240V, 50/60Hz

(8) Mode

C	Cooling Only (R410A)
H	Heat Pump (R410A)
F	Cooling Only (R32)
G	Heat Pump (R32)

1. Line-up

1-3. Combination Table (Outdoor-Indoor)

Indoor Unit		Outdoor Unit		Model		   		
		Model		AJ040TXJ2KG/EU	AJ050TXJ2KG/EU	AJ052TXJ3KG/EU	AJ068TXJ3KG/EU	AJ080TXJ4KG/EU
Model		Capacity (kW)	4.0	5.0	5.2	6.8	8.0	10.0
 Console	AJ026/035/052TNJDKG/EU	2.6	●	●	●			
		3.5	●	●	●			
		5.2		●	●			

2. Specification

2-2. Indoor units

Console

Type				Console	Console	Console
Model Name				AJ026TNJDKG/ EU	AJ035TNJDKG/ EU	AJ052TNJDKG/ EU
Power Supply			Φ, #, V, Hz	1,2,220-240,50	1,2,220-240,50	1,2,220-240,50
Mode			-	HP	HP	HP
Performance	Capacity	Cooling	kW	2.6	3.5	5.2
			Btu/h	8,900	11,900	17,700
		Heating	kW	2.9	3.8	5.6
			Btu/h	9,900	13,000	19,100
Power	Power Input	Cooling	W	30	35	50
		Heating		30	35	50
	Current Input	Cooling	A	0.25	0.29	0.35
		Heating		0.25	0.29	0.35
Heat exchanger	Type		-	Fin & Tube	Fin & Tube	Fin & Tube
	Material	Fin	-	Al	Al	Al
		Tube	-	Cu	Cu	Cu
	Fin Treatment		-	Green Hydrophile	Green Hydrophile	Green Hydrophile
Fan	Type		-	Turbo Fan	Turbo Fan	Turbo Fan
	Quantity		EA	1	1	1
	Air Flow Rate		m³/min	9.0 / 7.8 / 6.7	10.5 / 9.3 / 8.2	11.2 / 9.9 / 8.6
			l/s	150 / 130 / 112	175 / 155 / 137	187 / 165 / 143
	External Static pressure	Max. (Min/ Std/ Max)	mmAq	-	-	-
			Pa	-	-	-
Fan Motor	Type		-	BLDC	BLDC	BLDC
	Output x n		W	35 x 1	35 x 1	35 x 1
Piping Connections	Liquid Pipe		Type	Flare connection	Flare connection	Flare connection
			Φ, mm (inch)	6.35 (1/4)	6.35 (1/4)	6.35 (1/4)
	Gas Pipe		Type	Flare connection	Flare connection	Flare connection
			Φ, mm (inch)	9.52 (3/8)	9.52 (3/8)	12.7 (1/2)
	Heat Insulation		-	Both liquid and gas pipes	Both liquid and gas pipes	Both liquid and gas pipes
Drain Pipe		Φ,mm	VP25 (OD 32, ID 25)	VP25 (OD 32, ID 25)	VP25 (OD 32, ID 25)	
Wiring connections	Communication	Min.	mm²	0.75	0.75	0.75
		Remark	-	F1, F2	F1, F2	F1, F2
Refrigerant	Type		-	R32	R32	R32
	Electronic Expansion Valve		-	EEV NOT INCLUDED	EEV NOT INCLUDED	EEV NOT INCLUDED
Sound	Sound Pressure	H/ M/ L	dB(A)	36 / 32 / 27	38 / 35 / 30	43 / 39 / 32
	Sound Power	Cooling		53	57	60
External Dimension	Net Weight		kg	15.7	15.7	15.7
	Shipping Weight		kg	20.0	20.0	20.0
	Net Dimensions (W×H×D)		mm	720 x 620 x 199	720 x 620 x 199	720 x 620 x 199
	Shipping Dimensions (W×H×D)		mm	805 x 705 x 295	805 x 705 x 295	805 x 705 x 295
Casing	Material		-	HIPS	HIPS	HIPS

2. Specification

Type			Console	Console	Console	
Model Name			AJ026TNJDKG/ EU	AJ035TNJDKG/ EU	AJ052TNJDKG/ EU	
Drain pump	Drain pump		-	NOT INCLUDED	NOT INCLUDED	NOT INCLUDED
	Max. lifting Height / Displacement		mm / Liter/h	-	-	-
Additional Accessories	Drain pump	External Model	-	-	-	-
		Internal Model	-	-	-	-
		Max. lifting Height / Displacement	mm / liter/h	-	-	-
	SPI		-	Default	Default	Default
	Air Filter		-	Removable / Washable	Removable / Washable	Removable / Washable

NOTE

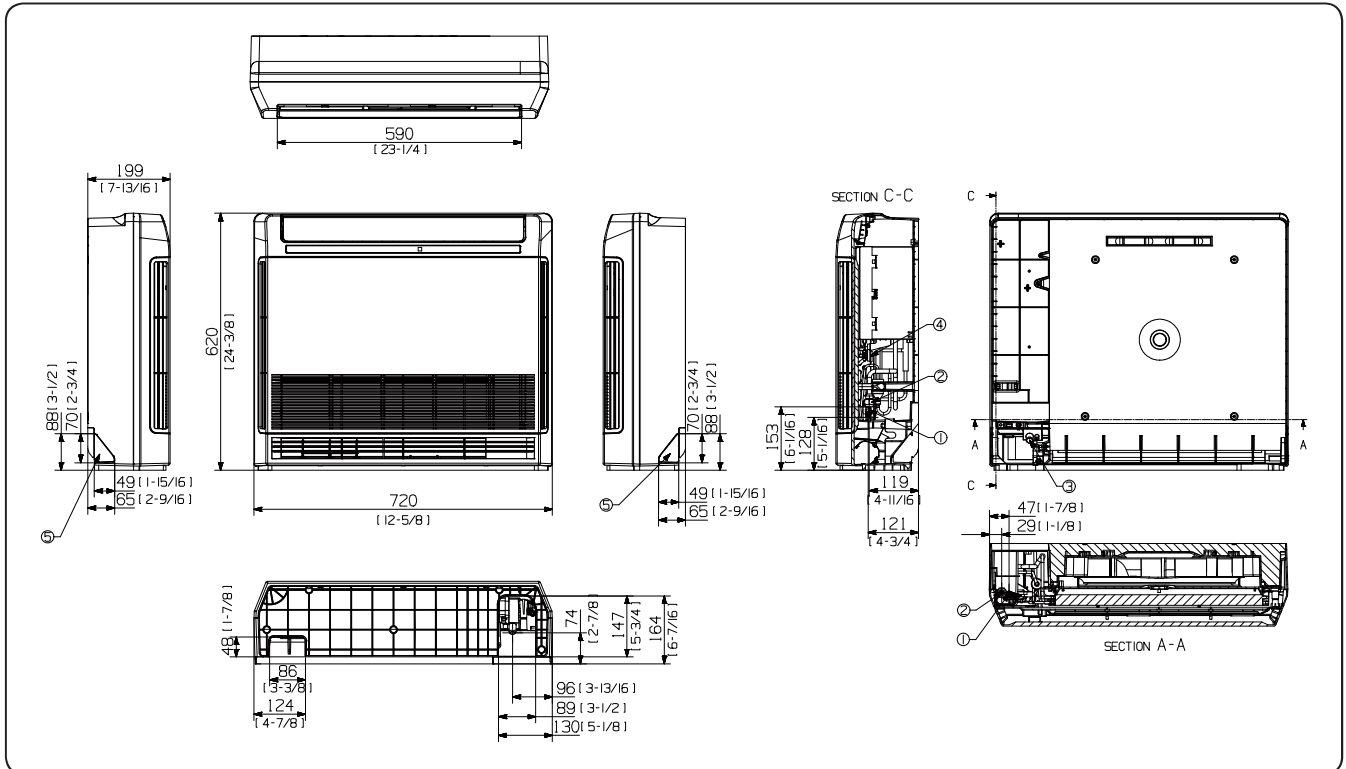
- Specifications may be subject to change without prior notice.
- 1)* Capacities are based on (Equivalent refrigerant piping : 5m, Level differences : 0m)
 - Cooling : Indoor temperature : 27°C DB, 19°C WB / Outdoor temperature : 35°C DB, 24°C WB
 - Heating : Indoor temperature : 20°C DB, 15°C WB / Outdoor temperature : 7°C DB, 6°C WB
- 2)* Select wire size based on the value of MCA
- 3)* Sound pressure level is obtained in an anechoic room.
 - Sound pressure level is a relative value, depending on the distance and acoustic environment.
 - Sound pressure level may differ depending on operation condition.
 - dBA = A-weighted sound pressure level
 - Reference acoustic pressure 0 dB = 20uPa
- 4)* Sound power level is an absolute value that a sound source generates.
 - dBA = A-weighted sound power level
 - Reference power : 1pW
 - Measured according to ISO 3741
- 5)* These products contain R32 (GWP=675) which is fluorinated greenhouse gas.

5. Dimensional Drawing

5-2. Indoor unit

7 Console : AJ026TNJDKG/ EU, AJ035TNJDKG/ EU, AJ052TNJDKG/ EU

Units : mm [inches]



NO	Name	Description	
		AJ026TNJDKG/ EU	AJ035TNJDKG/ EU AJ052TNJDKG/ EU
1	Liquid pipe connection	Φ6.35(1/4)	
2	Gas pipe connection	Φ9.52(3/8)	Φ12.7(1/2)
3	Drain pipe connection	ID18mm [11/ 16inch] Hose	
4	Power supply & Communication wiring conduit	-	
6	Knockout hole for drain hose	-	