

**SAMSUNG**

**FJM**

# Technical Data Book

**Free Joint Multi for Europe  
(R32, 50Hz, HP)**

**KASETA-1**



Model : Outdoor unit (AJ\*\*\*TXJ\*KG/EU)

Indoor unit (Wall-mounted, Wind-Free 1Way Cassette, Wind-Free 4Way Cassette(600x600), Duct, Console)

# Nomenclature

## Indoor Unit

1Way Cassette, 4Way Cassette(600x600), Duct, Console Type

Model Name

<b>AJ</b>	<b>026</b>	<b>R</b>	<b>B</b>	<b>1</b>	<b>D</b>	<b>E</b>	<b>G</b>	<b>/</b>	<b>EU</b>
(1)	(2)	(3)	(4)	(5)	(6)	(7)	(8)		Buyer

### (1) Classification

<b>AC</b>	CAC
<b>AM</b>	DVM
<b>AJ</b>	FJM (Free Joint Multi)
<b>AE</b>	EHS

### (2) Capacity

X1/ 10 kW(3 digits)
---------------------

### (3) Version

<b>R</b>	2019
<b>T</b>	2020
<b>A</b>	2021
<b>B</b>	2022

### (4) Product Type

<b>S</b>	SET (NASA)
<b>N</b>	Indoor Unit (NASA)
<b>X</b>	Outdoor Unit (NASA)
<b>A</b>	SET (Non NASA)
<b>B</b>	Indoor Unit (Non NASA)
<b>C</b>	Outdoor Unit (Non NASA)

### (5) Product Notation

<b>1</b>	(Wind-Free) 1Way Cassette
<b>N</b>	(Wind-Free) 4Way Cassette (600x600)
<b>L</b>	Slim Duct
<b>M</b>	MSP Duct
<b>J</b>	Console

### (6) Feature

<b>D</b>	DELUXE
<b>P</b>	Premium

### (7) Rating Voltage







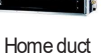
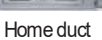
<b>A</b>	115V, 60Hz
<b>B</b>	220V, 60Hz
<b>C</b>	208~230V, 60Hz
<b>D</b>	200~220V, 50Hz
<b>E</b>	220~240V, 50Hz
<b>K</b>	220~240V, 50/60Hz

### (8) Mode

<b>C</b>	Cooling Only (R410A)
<b>H</b>	Heat Pump (R410A)
<b>F</b>	Cooling Only (R32)
<b>G</b>	Heat Pump (R32)

# 1. Line-up

## 1-3. Combination Table (Outdoor-Indoor)

Indoor Unit		Outdoor Unit		Model		Model		Model		Model	
		Model	Capacity (kW)	AJ040TXJ2KG/EU	AJ050TXJ2KG/EU	AJ052TXJ3KG/EU	AJ068TXJ3KG/EU	AJ080TXJ4KG/EU	AJ100TXJ5KG/EU		
 AR4500 (AIRSE)	AR07/09/ 12/ 18/ 24TXHZAWKNEU	2.0	●	●	●	●	●	●	●		
		2.5	●	●	●	●	●	●	●		
		3.5	●	●	●	●	●	●	●		
		5.0		●	●	●	●	●	●		
		6.5						●	●		
 AR5500 (GEO)	AR07/09/ 12/ 18/ 24TXFYAWKNEU	2.0	●	●	●	●	●	●	●		
		2.5	●	●	●	●	●	●	●		
		3.5	●	●	●	●	●	●	●		
		5.0		●	●	●	●	●	●		
		6.5						●	●		
 AR9500 (Wind-Free AIRSE)	AR07/09/ 12/ 18/ 24TXFCAWKNEU	2.0	●	●	●	●	●	●	●		
		2.5	●	●	●	●	●	●	●		
		3.5	●	●	●	●	●	●	●		
		5.0		●	●	●	●	●	●		
		6.5						●	●		
 AR9500 (Wind-Free GEO)	AR07/09/ 12/ 18/ 24TXEAAWKNEU	2.0	●	●	●	●	●	●	●		
		2.5	●	●	●	●	●	●	●		
		3.5	●	●	●	●	●	●	●		
		5.0		●	●	●	●	●	●		
		6.5						●	●		
	AR07/09/ 12TXCAAWKNEU	2.0	●	●	●	●	●	●	●		
		2.5	●	●	●	●	●	●	●		
		3.5	●	●	●	●	●	●	●		
	AR07/09/ 12CXCAAWKNEU	2.0	●	●	●	●	●	●	●		
		2.5	●	●	●	●	●	●	●		
3.5		●	●	●	●	●	●	●			
 Wind-Free 1Way CASSETTE	AJ026/035TN1DKG/EU	2.6	●	●	●	●	●	●			
		3.5	●	●	●	●	●	●			
 Wind-Free 4Way CASSETTE (600x600)	AJ016/020/026/035/052TNNDKG/EU	1.6		●	●	●	●	●			
		2.0		●	●	●	●	●			
		2.6		●	●	●	●	●			
		3.5		●	●	●	●	●			
		5.2					●	●	●		
 Home duct	AJ026/035TNL*EG/EU	2.6		●	●	●	●	●			
		3.5		●	●	●	●	●			
 Home duct	AJ052BNMDEG/EU	5.2				●	●	●			
		AJ052TNMDEG/EU	5.2				●	●	●		

# 2. Specification

## 2-2. Indoor units

(Wind-Free) 1 Way Cassette

Type				(Wind-Free) 1 Way Cassette	(Wind-Free) 1 Way Cassette
Model Name				AJ026TN1DKG/ EU	AJ035TN1DKG/ EU
Power Supply			Ø, #, V, Hz	1, 2, 220-240, 50	1, 2, 220-240, 50
Mode			-	HP	HP
Performance	Capacity (Nominal)	Cooling	kW	2.60	3.50
			Btu/h	8,900	11,900
		Heating	kW	2.90	3.80
			Btu/h	9,900	13,000
Power	Power Input (Nominal)	Cooling	W	30.00	30.00
		Heating	W	30.00	30.00
	Current Input (Nominal)	Cooling	A	0.30	0.30
		Heating	A	0.30	0.30
Heat Exchanger	Type		-	Fin & Tube	Fin & Tube
	Material	Fin	-	Al	Al
		Tube	-	Cu	Cu
	Fin Treatment		-	Green Hydrophile	Green Hydrophile
Fan	Type		-	Crossflow Fan	Crossflow Fan
	Quantity		EA	1	1
	Air Flow Rate		m³/min	7.3 / 6.5 / 5.8	9.0 / 8.2 / 7.2
			l/s	122 / 108 / 97	150 / 137 / 120
	External Static Pressure	Max. (Min/ Std/ Max)	mmAq	-	-
			Pa	-	-
Fan Motor	Type		-	BLDC	BLDC
	Output		W x n	27 x 1	27 x 1
Piping Connections	Liquid Pipe		Type	Flare connection	Flare connection
			Φ, mm (inch)	6.35 (1/4)	6.35 (1/4)
	Gas Pipe		Type	Flare connection	Flare connection
			Φ, mm (inch)	9.52 (3/8)	9.52 (3/8)
	Heat Insulation		-	Both liquid and gas pipes	Both liquid and gas pipes
	Drain Pipe		Φ, mm	VP20 (OD 25, ID 20)	VP20 (OD 25, ID 20)
Wiring connections	Communication	Min.	mm²	0.75	0.75
		Remark	-	F1, F2	F1, F2
Refrigerant	Type		-	R32	R32
	Electronic Expansion Valve		-	EEV NOT INCLUDED	EEV NOT INCLUDED
Sound	Sound Pressure Level	H/ Silent	dB(A)	32 / 29 / 26	37 / 35 / 30
	Sound Power Level		dB(A)	50	55
External Dimension	Net Weight		kg	9.5	9.5
	Shipping Weight		kg	12.5	12.5
	Net Dimensions (WxHxD)		mm	970 x 135 x 410	970 x 135 x 410
	Shipping Dimensions (WxHxD)		mm	1173 x 231 x 487	1173 x 231 x 487
Casing	Material		-	ABS	ABS

## 2. Specification

Type			(Wind-Free) 1 Way Cassette	(Wind-Free) 1 Way Cassette
Model Name			AJ026TN1DKG/ EU	AJ035TN1DKG/ EU
Panel 1	Model Name	-	PC1NWFMAN	PC1NWFMAN
	Type	-	Wind-Free	Wind-Free
	Material	-	HIPS	HIPS
	Color	-	White	White
	Net Weight	kg	4.3	4.3
	Shipping Weight	kg	6.3	6.3
	Net Dimensions (W×H×D)	mm	1,198 x 35 x 500	1,198 x 35 x 500
	Shipping Dimensions (W×H×D)	mm	1,262 x 122 x 566	1,262 x 122 x 566
Panel 2	Model Name	-	PC1NUSMAN	PC1NUSMAN
	Type	-	Normal	Normal
	Material	-	HIPS	HIPS
	Color	-	White	White
	Net Weight	kg	4.2	4.2
	Shipping Weight	kg	6.1	6.1
	Net Dimensions (W×H×D)	mm	1,180 x 25 x 460	1,180 x 25 x 460
	Shipping Dimensions (W×H×D)	mm	1,250 x 126 x 530	1,250 x 126 x 530
Additional Accessories	Drain pump		Built in	Built in
		Max. lifting Height / Displacement	mm / liter/h	750 / 24
	Air Filter		Option (Removable / Washable)	Option (Removable / Washable)

### NOTE

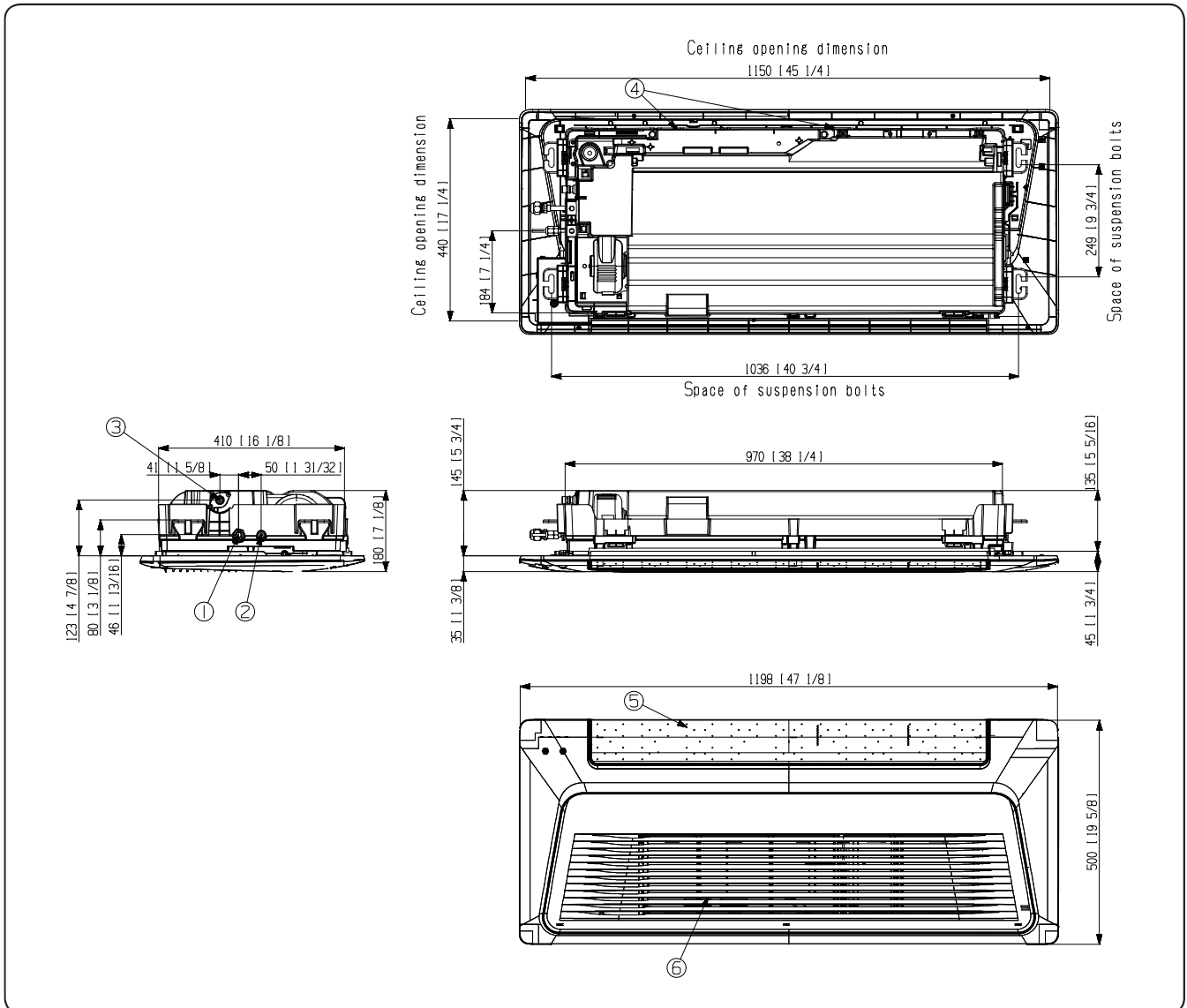
- Specifications may be subject to change without prior notice.
- 1)\* Capacities are based on (Equivalent refrigerant piping : 5m, Level differences : 0m)
  - Cooling : Indoor temperature : 27°C DB, 19°C WB / Outdoor temperature : 35°C DB, 24°C WB
  - Heating : Indoor temperature : 20°C DB, 15°C WB / Outdoor temperature : 7°C DB, 6°C WB
- 2)\* Select wire size based on the value of MCA
- 3)\* Sound pressure level is obtained in an anechoic room.
  - Sound pressure level is a relative value, depending on the distance and acoustic environment.
  - Sound pressure level may differ depending on operation condition.
  - dBA = A-weighted sound pressure level
  - Reference acoustic pressure 0 dB = 20uPa
- 4)\* Sound power level is an absolute value that a sound source generates.
  - dBA = A-weighted sound power level
  - Reference power : 1pW
  - Measured according to ISO 3741
- 5)\* These products contain R32 (GWP=675) which is fluorinated greenhouse gas.

# 5. Dimensional Drawing

## 5-2. Indoor unit

### 4 Wind-Free 1Way Cassette : AJ026TN1DKG/ EU, AJ035TN1DKG/ EU

Units : mm [inches]



No	Name	Description	No	Name	Description
1	Gas pipe connection	Φ9.52 (3/8)	5	Air outlet louver	-
2	Liquid pipe connection	Ø6.35 (1/4)	6	Air inlet grille	-
3	Drain hose connection	VP20 (OD26, ID20)			
4	Power supply/ Communication wiring conduit	-			

### NOTE

- As for suspension bolt, please use M8 ~ 10. (Produced at local site)