

SAMSUNG

FJM

Technical Data Book

**Free Joint Multi for Europe
(R32, 50Hz, HP)**

DUCT SLIM



Model : Outdoor unit (AJ***TXJ*KG/EU)

Indoor unit (Wall-mounted, Wind-Free 1Way Cassette, Wind-Free 4Way Cassette(600x600), Duct, Console)

Nomenclature

Indoor Unit

1Way Cassette, 4Way Cassette(600x600), Duct, Console Type

Model Name

AJ	026	R	B	1	D	E	G	/	EU
(1)	(2)	(3)	(4)	(5)	(6)	(7)	(8)		Buyer

(1) Classification

AC	CAC
AM	DVM
AJ	FJM (Free Joint Multi)
AE	EHS

(2) Capacity

X1/ 10 kW(3 digits)

(3) Version

R	2019
T	2020
A	2021
B	2022

(4) Product Type

S	SET (NASA)
N	Indoor Unit (NASA)
X	Outdoor Unit (NASA)
A	SET (Non NASA)
B	Indoor Unit (Non NASA)
C	Outdoor Unit (Non NASA)

(5) Product Notation

1	(Wind-Free) 1Way Cassette
N	(Wind-Free) 4Way Cassette (600x600)
L	Slim Duct
M	MSP Duct
J	Console

(6) Feature

D	DELUXE
P	Premium

(7) Rating Voltage









A	115V, 60Hz
B	220V, 60Hz
C	208~230V, 60Hz
D	200~220V, 50Hz
E	220~240V, 50Hz
K	220~240V, 50/60Hz

(8) Mode

C	Cooling Only (R410A)
H	Heat Pump (R410A)
F	Cooling Only (R32)
G	Heat Pump (R32)

1. Line-up

1-3. Combination Table (Outdoor-Indoor)

Indoor Unit		Outdoor Unit		Model		Model		Model		Model	
		Model	Capacity (kW)	AJ040TXJ2KG/EU	AJ050TXJ2KG/EU	AJ052TXJ3KG/EU	AJ068TXJ3KG/EU	AJ080TXJ4KG/EU	AJ100TXJ5KG/EU		
 AR4500 (AIRSE)	AR07/09/ 12/ 18/ 24TXHZAWKNEU	2.0	●	●	●	●	●	●	●		
		2.5	●	●	●	●	●	●	●		
		3.5	●	●	●	●	●	●	●		
		5.0		●	●	●	●	●	●		
		6.5						●	●		
 AR5500 (GEO)	AR07/09/ 12/ 18/ 24TFYAWKNEU	2.0	●	●	●	●	●	●	●		
		2.5	●	●	●	●	●	●	●		
		3.5	●	●	●	●	●	●	●		
		5.0		●	●	●	●	●	●		
		6.5						●	●		
 AR9500 (Wind-Free AIRSE)	AR07/09/ 12/ 18/ 24TXFCAWKNEU	2.0	●	●	●	●	●	●	●		
		2.5	●	●	●	●	●	●	●		
		3.5	●	●	●	●	●	●	●		
		5.0		●	●	●	●	●	●		
		6.5						●	●		
 AR9500 (Wind-Free GEO)	AR07/09/ 12/ 18/ 24TXEAAWKNEU	2.0	●	●	●	●	●	●	●		
		2.5	●	●	●	●	●	●	●		
		3.5	●	●	●	●	●	●	●		
		5.0		●	●	●	●	●	●		
		6.5						●	●		
	AR07/09/ 12TXCAAWKNEU	2.0	●	●	●	●	●	●	●		
		2.5	●	●	●	●	●	●	●		
		3.5	●	●	●	●	●	●	●		
	AR07/09/ 12CXCAAWKNEU	2.0	●	●	●	●	●	●	●		
		2.5	●	●	●	●	●	●	●		
	3.5	●	●	●	●	●	●	●			
 Wind-Free 1Way CASSETTE	AJ026/035TN1DKG/EU	2.6	●	●	●	●	●	●			
		3.5	●	●	●	●	●	●			
 Wind-Free 4Way CASSETTE (600x600)	AJ016/020/026/035/052TNNDKG/EU	1.6		●	●	●	●	●			
		2.0		●	●	●	●	●			
		2.6		●	●	●	●	●			
		3.5		●	●	●	●	●			
		5.2					●	●	●		
 Home duct	AJ026/035TNL*EG/EU	2.6		●	●	●	●	●			
		3.5		●	●	●	●	●			
 Home duct	AJ052BNMDEG/EU	5.2				●	●	●			
		5.2				●	●	●			

2. Specification

2-2. Indoor units

Duct

Type				Home Duct	Home Duct	Home Duct	
Model				AJ026TNLDEG/EU	AJ035TNLDEG/EU	AJ026TNLPEG/EU	
Power Supply			Φ, #, V, Hz	1,2,220-240,50	1,2,220-240,50	1,2,220-240,50	
Mode			-	HP	HP	HP	
Performance	Capacity (Nominal)	Cooling 2)	kW	2.6	3.5	2.6	
			Btu/h	8,900	11,900	8,900	
		Heating 2)	kW	2.9	3.8	2.9	
			Btu/h	9,900	13,000	9,900	
Power	Power Input (Nominal)	Cooling 1)	W	80	80	80	
		Heating 2)		80	80	80	
	Current Input (Nominal)	Cooling 1)	A	0.4	0.4	0.4	
		Heating 2)		0.4	0.4	0.4	
Fan	Motor	Type	-	Sirroco Fan / BLDC	Sirroco Fan / BLDC	Sirroco Fan / BLDC	
		Output x n	W	69 x 1	69 x 1	69 x 1	
	Air Flow Rate	H/M/L(UL)	CMM		9.1/ 7.7/ 5.7	9.5/ 7.9/ 6.2	9.1/ 7.7/ 5.7
			l/s		152/ 128/ 95	158/ 131/ 103	152/ 128/ 95
	External Pressure	Min/ Std/ Max	mmAq		0 / 1/ 3	0 / 1/ 3	0 / 1/ 3
			Pa		0 / 9.8/ 29.4	0 / 9.8/ 29.4	0 / 9.8/ 29.4
Piping Connections	Liquid Pipe		Φ,mm	6.35	6.35	6.35	
			Φ, inch	1/4	1/4	1/4	
	Gas Pipe		Φ,mm	9.52	9.52	9.52	
			Φ, inch	3/8	3/8	3/8	
Drain Pipe		Φ,mm	VP25 (OD 32, ID 25)	VP25 (OD 32, ID 25)	VP25 (OD 32, ID 25)		
Field Wiring	Power Source Wire		mm ²	1.5 ~ 2.5	1.5 ~ 2.5	1.5 ~ 2.5	
	Transmission Cable		mm ²	0.75 ~ 1.50	0.75 ~ 1.50	0.75 ~ 1.50	
Refrigerant	Type		-	R32	R32	R32	
	Control Method		-	EEV NOT INCLUDED	EEV NOT INCLUDED	EEV NOT INCLUDED	
Sound	Sound Pressure	H/M/L	dB(A)	33 / 29 / 23	34 / 30 / 25	33 / 29 / 23	
	Sound Power	Cooling		50	50	50	
Dimensions	Net Weight		kg	14.8	14.8	15.0	
	Shipping Weight		kg	17.7	17.7	18.0	
	Net Dimensions (W×H×D)		mm	700 x 199 x 440	700 x 199 x 440	700 x 199 x 440	
	Shipping Dimensions (W×H×D)		mm	949 x 280 x 544	949 x 280 x 544	949 x 280 x 544	
Casing	Material		-	HIPS	HIPS	HIPS	
Drain pump	Drain pump		-	NOT INCLUDED	NOT INCLUDED	INCLUDED	
	Max. lifting Height / Displacement		mm / Liter/h	-	-	750/ 24	

2. Specification

Type				Home Duct	Home Duct	Home Duct
Model				AJ026TNLDEG/EU	AJ035TNLDEG/EU	AJ026TNLPEG/EU
Additional Accessories	Drain pump	External Model	-	-	-	-
		Internal Model	-	Optional MDP-Z075SZED	Optional MDP-Z075SZED	X
		Max. lifting Height / Displacement	mm / liter/h	750/24	750/24	-
	Air Filter	-	Removable / Washable	Removable / Washable	Removable / Washable	

NOTE

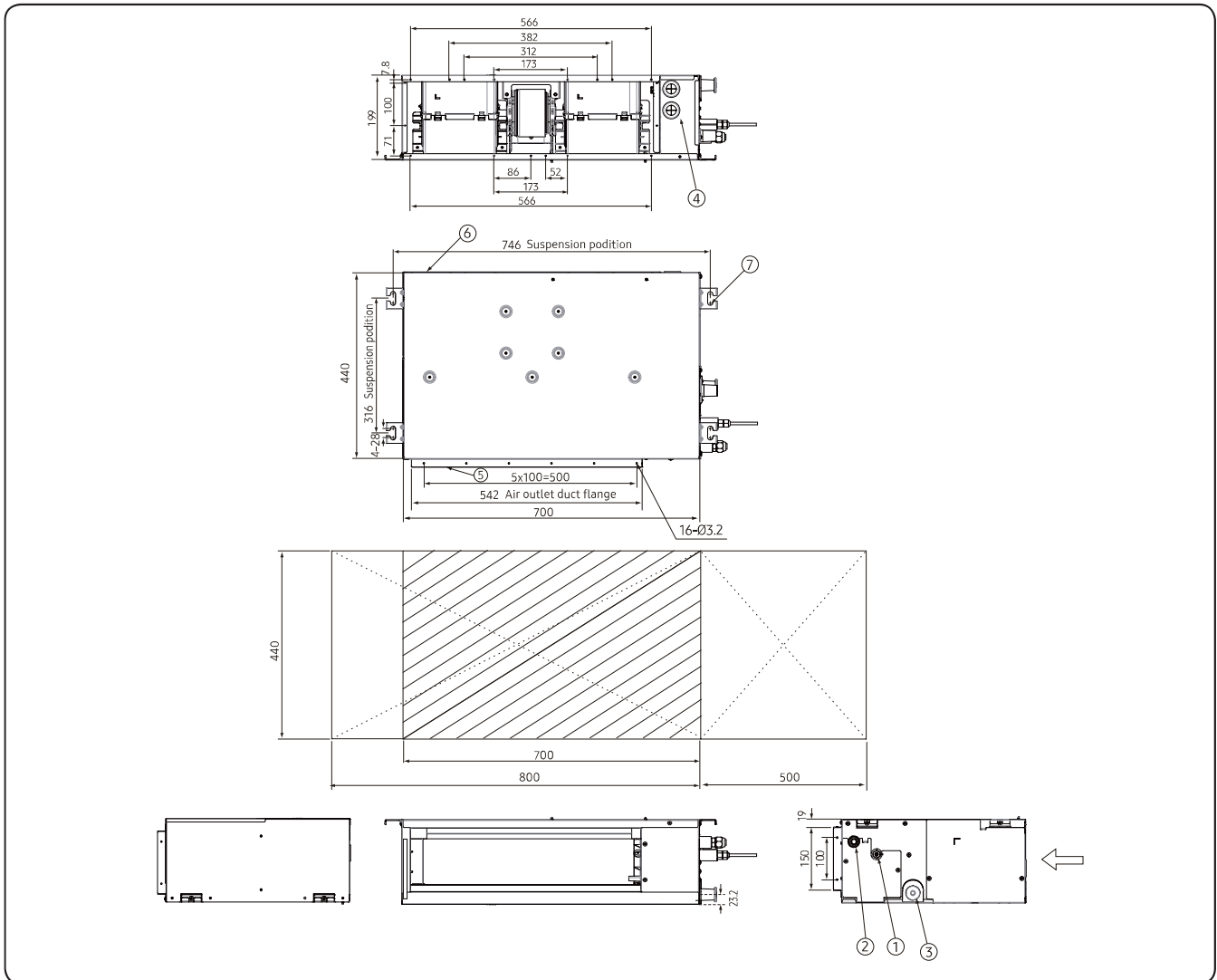
- Specifications may be subject to change without prior notice.
- 1)* Capacities are based on (Equivalent refrigerant piping : 5m, Level differences : 0m)
 - Cooling : Indoor temperature : 27°C DB, 19°C WB / Outdoor temperature : 35°C DB, 24°C WB
 - Heating : Indoor temperature : 20°C DB, 15°C WB / Outdoor temperature : 7°C DB, 6°C WB
- 2)* Select wire size based on the value of MCA
- 3)* Sound pressure level is obtained in an anechoic room.
 - Sound pressure level is a relative value, depending on the distance and acoustic environment.
 - Sound pressure level may differ depending on operation condition.
 - dBA = A-weighted sound pressure level
 - Reference acoustic pressure 0 dB = 20uPa
- 4)* Sound power level is an absolute value that a sound source generates.
 - dBA = A-weighted sound power level
 - Reference power : 1pW
 - Measured according to ISO 3741
- 5)* These products contain R32 (GWP=675) which is fluorinated greenhouse gas.

5. Dimensional Drawing

5-2. Indoor unit

6 Home duct : AJ026TNLDEG/ EU, AJ035TNLDEG/ EU

Units : mm [inches]



NO	Name	Description
1	Liquid pipe connection	ø6.35
2	Gas pipe connection	ø12.70
3	Drain pipe connection without drain pump	VP25 (OD ø32, ID ø25)
4	Power supply/ Communication connection	-
5	Air discharge grille flange	-
6	Return air side	-
7	Hook	ø9.52 or M10

NOTE

- As for drain pipe, please use VP25 (PVC, O.D.I - 1/4 (32 mm)).
- As for suspension bolt, please use M10 or W3/8. (Produced at local site)