

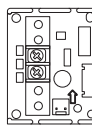



# Remocon module installation



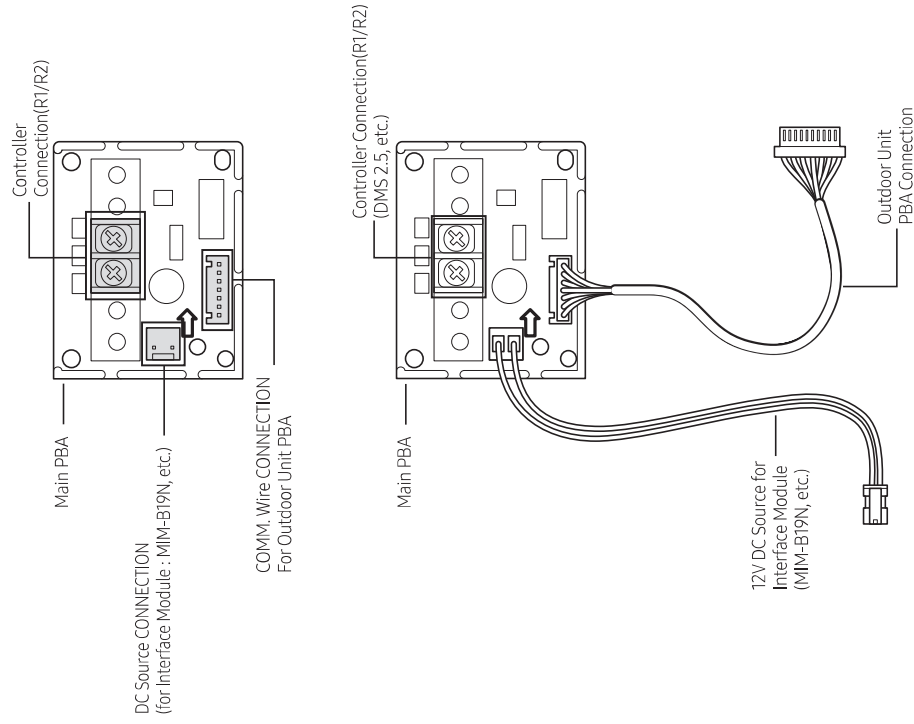
DB68-08844A-00

■ Model : MIM-R10N / R10UN

## Components part

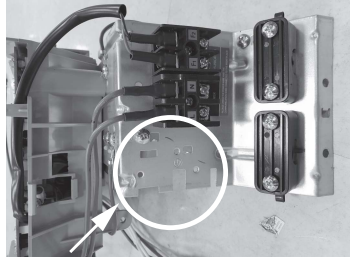
Product Name	Main PBA	COMM. Wire	DC Source Wire	Support PBA
Quantity	1EA	1EA	1EA	2EA
Shape				
Code	DB92-04835A	DB93-17173A	DB39-00378B	DB61-04398A

## Description

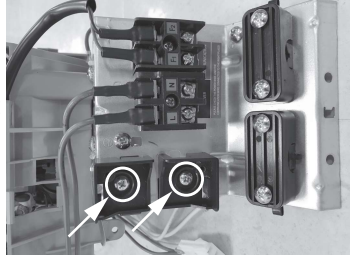


## Installation

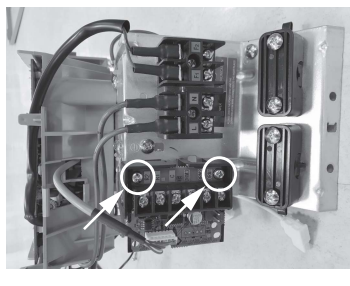
1. Check the PBA install location



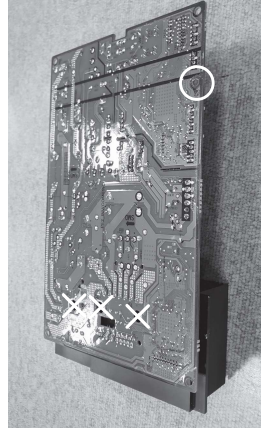
2. Install the support(2EA)



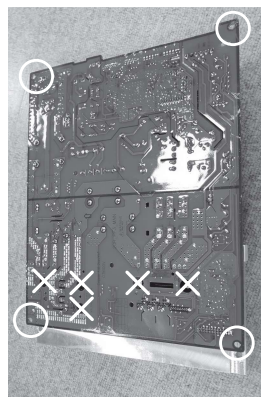
3. Install the PBA



4. Remove the PBA screw(Not the heat sink screw)



or



5. Pull up the PBA of outdoor unit and connect to CN320(White 7 pin connector)

